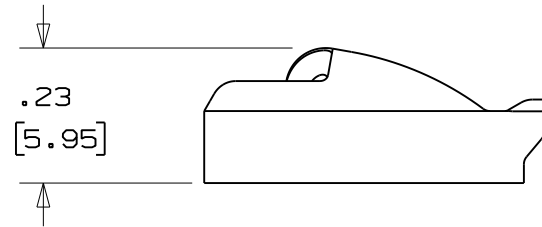
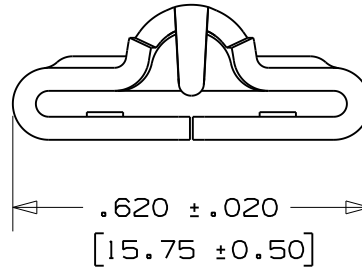
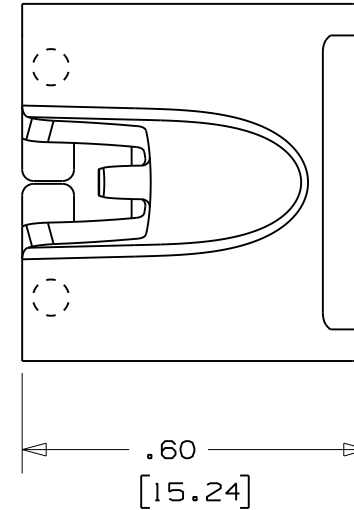


THIS COPY IS PROVIDED ON A RESTRICTED BASIS AND IS NOT TO BE USED IN ANY WAY DETRIMENTAL TO THE INTERESTS OF PANDUIT CORP.

NOTES:

1. TO BE USED WITH PANDUIT METAL BANDING MBEH-TLR316.
2. APPLICATION TOOL: RT2HT, ST3MT
3. DIMENSIONS IN BRACKETS [ ] ARE MILLIMETERS.
4. MINIMUM LOOP TENSILE STRENGTH: 300 LBS (1335 newtons)
5. TOLERANCES:
  - .X = ±.030 [ .762 ]
  - .XX = ±.020 [ .508 ]
  - .XXX = ±.010 [ .254 ]
  - ANGLES = ±2°
6. MATERIAL: 316 STAINLESS STEEL



N41203BS\_DC/00A

					<h1 style="margin: 0;">PANDUIT</h1> <p style="margin: 0;">CORP. TINLEY PARK, ILLINOIS</p>		
					<p style="margin: 0;">METAL LOCKING TIE HEAD-EXTRA HEAVY DUTY FOR UNCOATED BANDING PART NO. MTHEH-C316 CUSTOMER DRAWING</p>		
					<p style="margin: 0;">UNLESS OTHERWISE SPECIFIED, DIMENSIONAL TOLERANCES ARE:</p> <p style="margin: 0;">(.X) ±                    (.XXX) ± (.XX) ±                    ANGLES ±</p>		<p style="margin: 0;">UNLESS OTHERWISE SPECIFIED, ALL DIMENSIONS ARE GIVEN IN INCHES, THIRD ANGLE PROJECTION.</p>
OOA	10/08	JAMB	SKB	ORIG CAD FILE SPEC WAS S41203_00 NOTE 2: APPLICATION TOOL RTIHT REPLACED BY RT2HT	DRAWN BY JAMB	MAT'L:	SCALE 3x
00	9/05	JAMB	EJD	DRAWING RELEASED	DATE 9/16/05	SEE TABLE	DRAWING NO. N41203BS_DC
REV	DATE	BY	CHK	DESCRIPTION	ECN #		CHK'D EJD